



Kimmane  
LUXURY RESORT  
— SHIVAMOGGA —



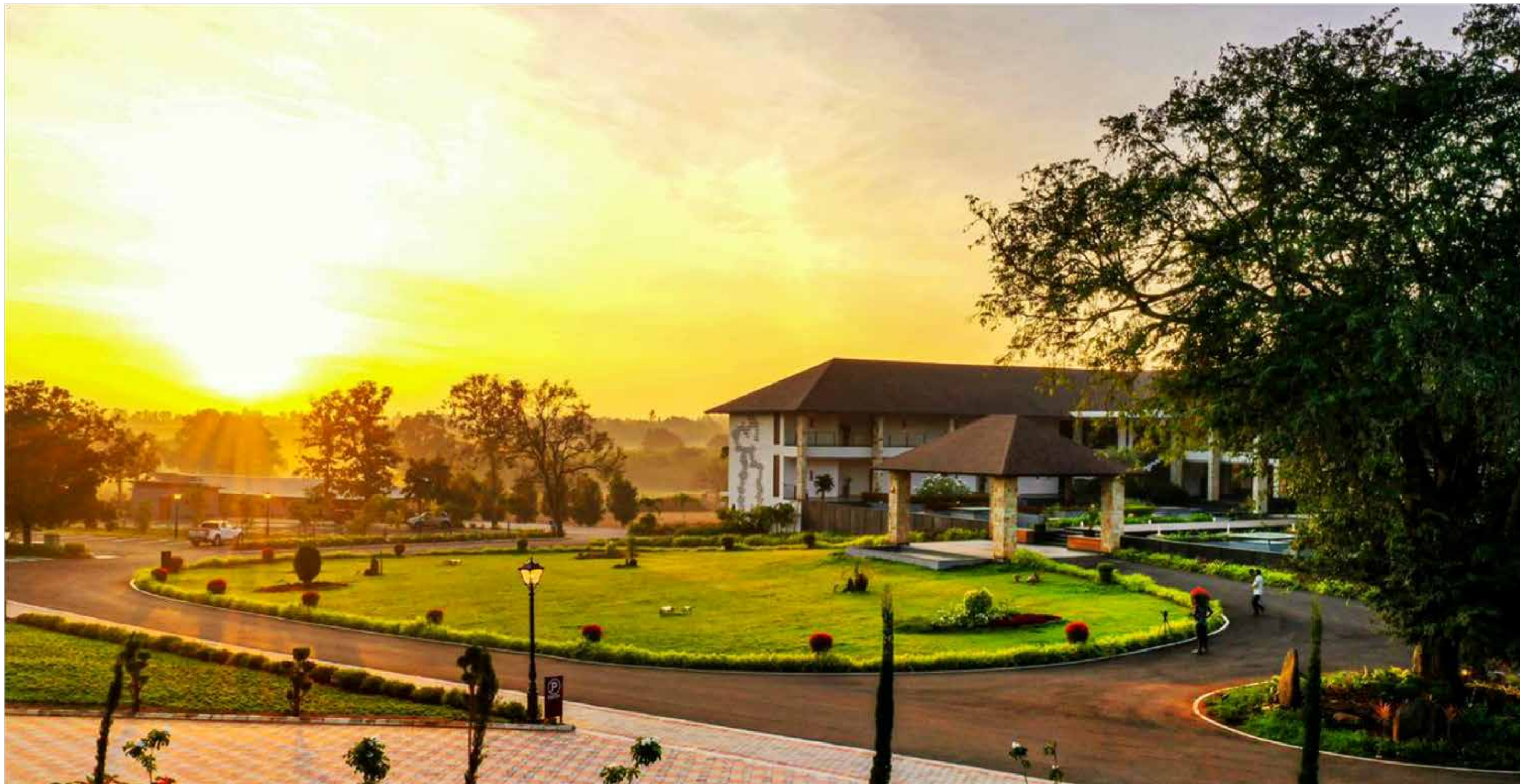


## Gateway to Malnad

### WESTERN GHATS

Shivamogga a gateway to Malnad long noted for its beauty among the locals, the Kimmane Luxury Resort invites you to unwind in blissful seclusion.





## A LUXURY BEAUTY AT Shivamogga

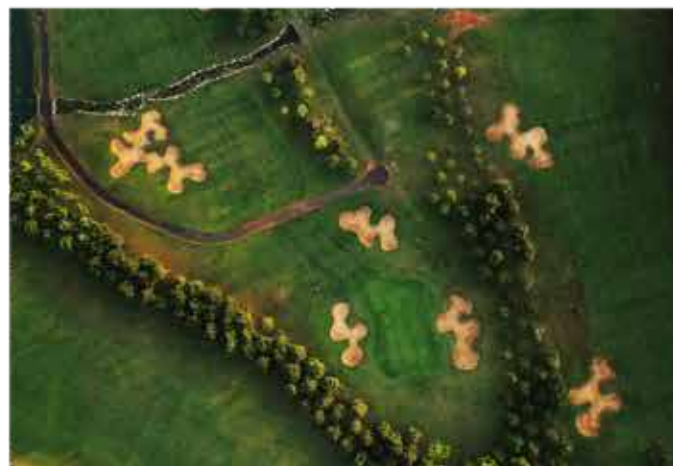
The Kimmane Luxury Resor is Shivamogga's first luxury stay experience. located amid malnad's glorious nature. Escape from the mundane bustling crowds and din, and step into a sanctuary of tranquility and relaxation. Kimmane Golf Terrain which adjoins the KLR is a 9 - hole golf course.

Along with catering to professional golfers from around the world, KGT also opens doors to the golfing world to anyone who wants to learn with fun and short golf courses.

Our Resort offers 26 luxury premium rooms and 4 suites. Bond with your loved ones and make memories at our unique properties - a home, away from home.







## Golf at Shivamogga

Kimmane Golf Terrain that adjoins the Kimmane Luxury Resort, is a 9-hole, 3236-yard course, par 35 layout.

### Kimmane Golf Terrain A 9 HOLE GOLF COURSE

Membership Enquiry - +91 901 996 0026





Lobby Entrance



Lobby Sitout



Common Area



Swimming Pool with Bar



Lobby Sitout







## SAA

A MULTI CUISINE  
RESTAURANT

Elegant, laid back feel, SAA restaurant offering changing menus for each meal time with a choice of both indoor and alfresco dining so that you enjoy the fabulous views. While creating an informal yet sophisticated style of dining, SAA service makes sure to get the dishes steadily on the table to let the guests enjoy their food and drinks with zing.

## THE QUARTER

RESTO BAR

The Quarter brings a hint of nostalgia in the air exploring the idea of real conversation over classic cocktails, exquisite snacks, classy interiors, cutting edge décor and elegant furniture style reflect warmth and hospitality like no other while you drink to all this! Buzzing with hip music the bar has a chic aesthetic vibe to it.





## SPILL THE BEANS COFFEE SHOP

You don't really need to read quotes on coffee from celebrated writers to know that the bean has been a staple of the literary diet for centuries, but it's just too hard to resist the Spill the Beans Cafe at Kimmane Golf Resort. In addition to serving the best coffee and latte you have ever sipped Spill the Beans also serves some of exquisite pastries, milk shakes, salads & Sandwiches



## MELO THE SPA

Love yourself, take care of yourself, and to make your happiness a priority. It's necessary. Sometimes the best thing to do is just call it a day and go get a massage. Keep calm and make a self-care plan at our Melo spa.







## Premium Room

A bright smart layout the premium room is spacious with most amenities at hand. Most premium rooms face the golf course with a balcony and external seating with a back drop of Western Ghats.

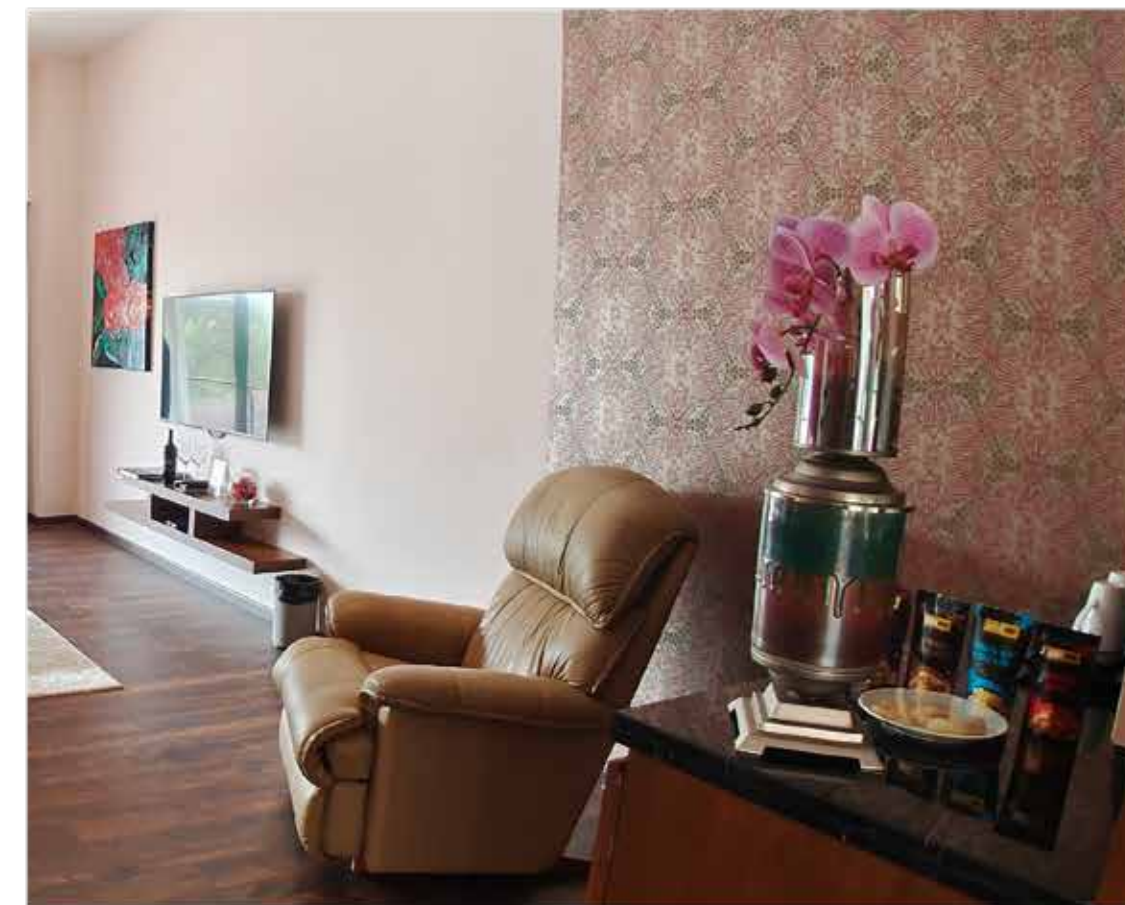






## Club Suite

A spacious and stylish suite with a separate seating area with a luxurious lounge sofa and a spacious bathroom. The club suite has in-room bar of its own and has an outdoor balcony with external seating.





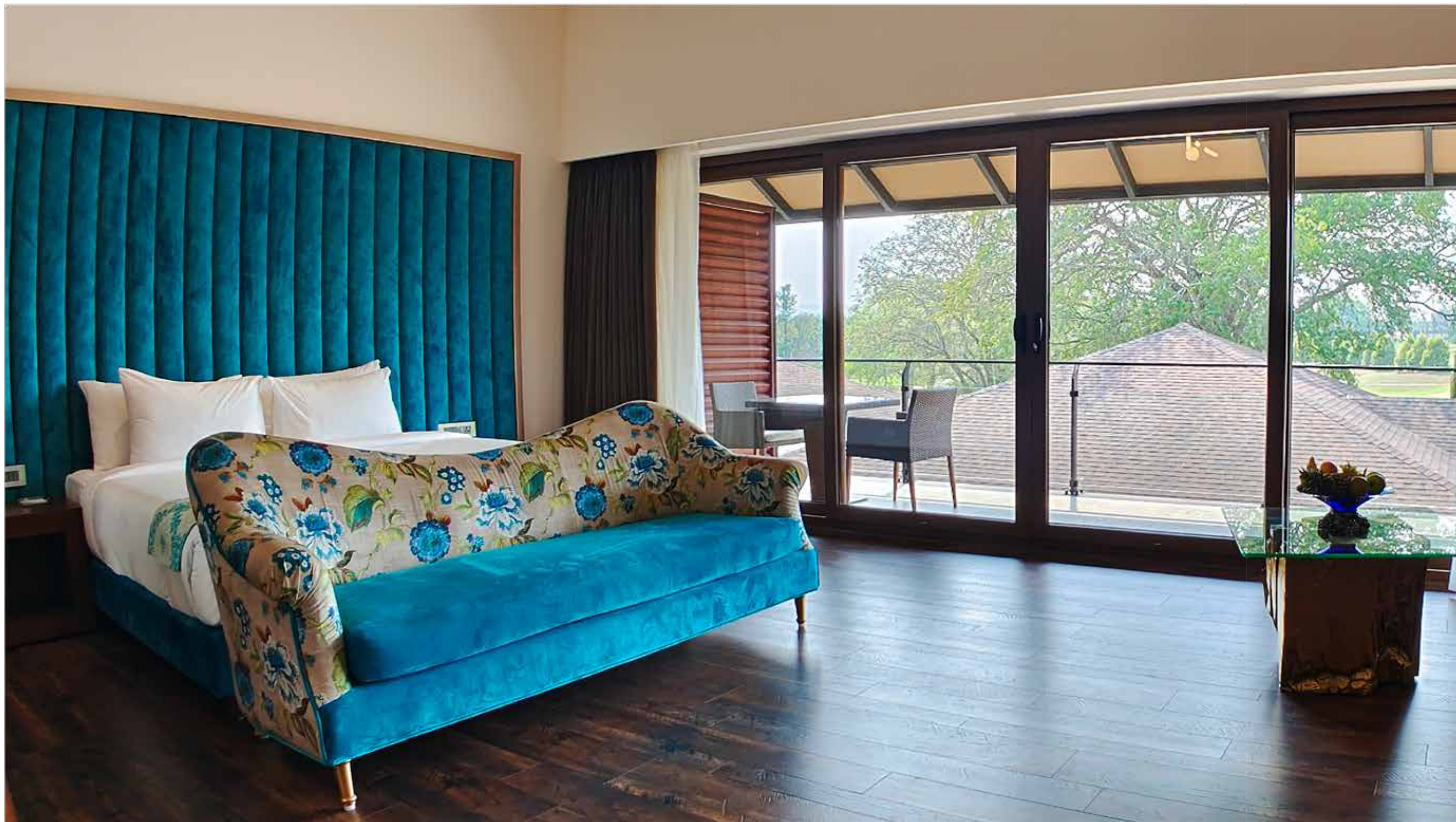


## Suite Panorama

Featuring natural tones and expansive indoor space and a balcony, our club panorama suites are decadently appointed for a luxurious stay. Enjoy a huge bathroom, stunning views and a separate dining area.







## Kimmane Suite

Indulge in a kimmane experience. This spacious suite has two bedrooms ideal for a family. The air-conditioned living and dining room come with audio-visual entertainment and comfortable sofas.







Destination Wedding at The Kimmane Luxury Resorts.





## Banquet Halls

Our halls lets out into an open sky venue with picturesque greens of the golf course and western ghats as backdrop.



Kayaking



Gym



Coracling

## A day at Kimmane

Golfing, fishing, Coracling,  
Kayaking, Cycling & Spa



Trekking



Cycling



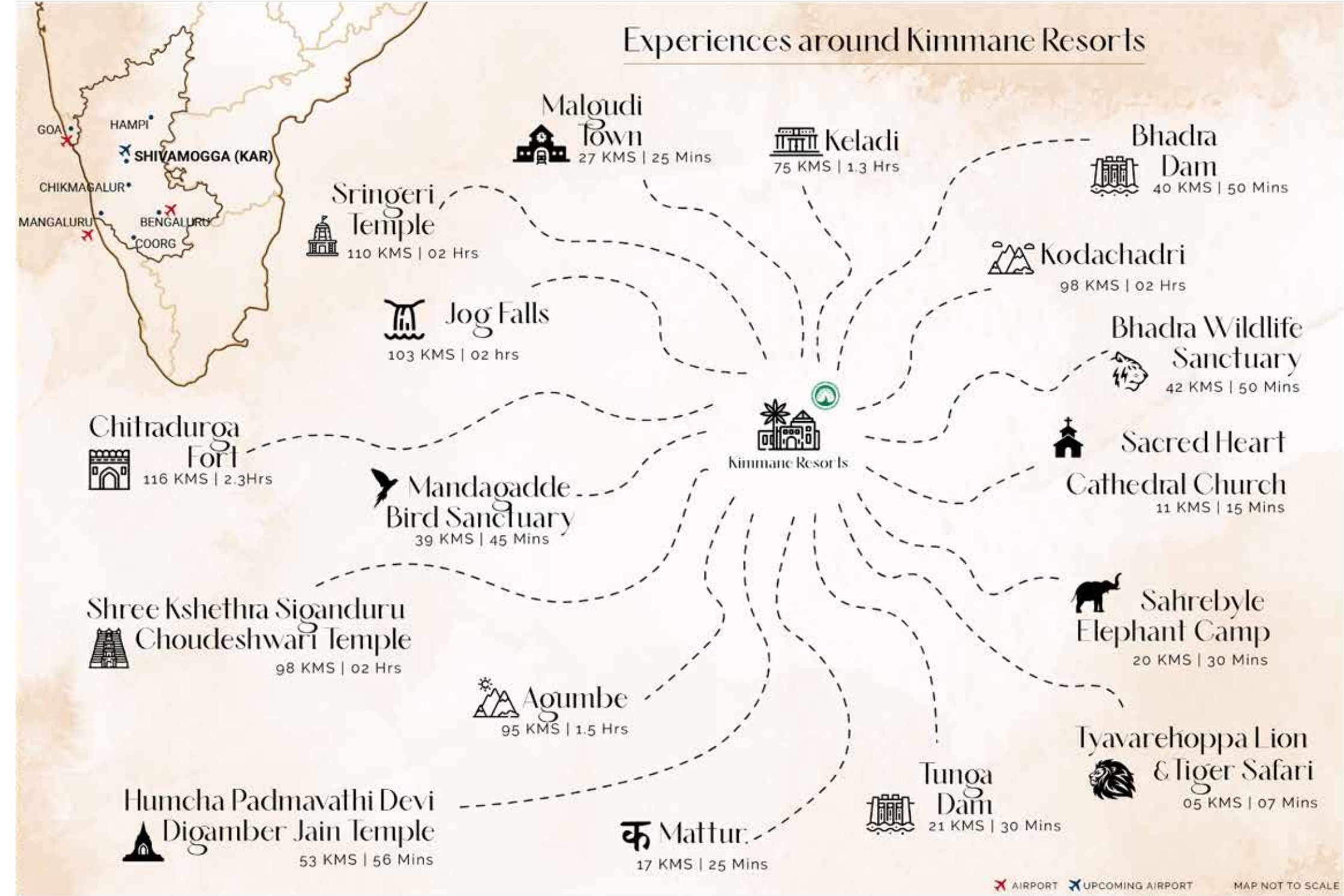
Golf





### Experiences around kimmene

Bhadra Tiger Reserve, Lion Sanctuary Elephant Camp, Jog Fall, Sringeri Temple Sigandur Temple, Humcha Temple Sharavathi Adventure Camp, Vijaynagar Empire, Chitradurga Fort, Malgudi Village & a lot more.







## Reach us

### Resort Enquiry:

+91 901 9960 035 | [sales@kimmanegolfresort.com](mailto:sales@kimmanegolfresort.com)

### Golf Membership Enquiry:

+91 901 9960 026 | [reservations@kimmanegolfresort.com](mailto:reservations@kimmanegolfresort.com)

Resort Address: 35/2 Aladevara Hosur, Bengaluru - Honnavar Road,  
behind PESIT College, Kasaba Hobli, Shivamogga, Karnataka 577 205

Corporate Address: 387/4, First Floor Aster Chambers, 13th Cross,  
Sadashivanagar, Bangalore 560 080